

Saturday, April 12, 2025  
Time of Issue: 1945 hours IST  
(NIGHT)

All India Impact Based Weather Warning Bulletin

Weather Warnings for next 7 days is given below:

(Graphics for warnings & rainfall distribution (Table 1) are given below the text:

**12<sup>th</sup> April (Day 1):**

- ❖ **Heavy rainfall ( $\geq 7$  cm)** very likely at isolated places over Sub-Himalayan West Bengal & Sikkim, Arunachal Pradesh and Assam & Meghalaya, Tamil Nadu, Puducherry & Karaikal and Kerala & Mahe.
- ❖ **Thundersquall accompanied with lightning, gusty Winds (speed reaching 50 - 60 kmph) & hailstorm** very likely at isolated places over East Uttar Pradesh, Odisha and Madhya Pradesh; **Thundersquall accompanied with lightning & gusty Winds (speed reaching 50 - 60 kmph)** at isolated places over Gangetic West Bengal & Jharkhand; **Thunderstorm accompanied with lightning, gusty Winds (speed reaching 40 - 50 kmph) & hailstorm** at isolated places over West Uttar Pradesh; **with lightning & gusty Winds (speed reaching 30 - 40 kmph) & hailstorm** at isolated places over Uttarakhand; **with lightning & gusty Winds (speed reaching 40 - 50 kmph)** at isolated places over East Rajasthan, Bihar, Sub-Himalayan West Bengal & Sikkim, Coastal Andhra Pradesh & Yanam; **with lightning & gusty Winds (speed reaching 30 - 40 kmph)** at isolated places over West Rajasthan, Chhattisgarh, Assam & Meghalaya, Madhya Maharashtra, Saurashtra & Kutch, Gujarat Region, Kerala & Mahe, Rayalaseema, Telangana, South Interior Karnataka; **with lightning** at isolated places over Haryana-Chandigarh-Delhi, Himachal Pradesh, Arunachal Pradesh, Nagaland, Manipur, Mizoram & Tripura, Tamil Nadu, Puducherry & Karaikal, Coastal Karnataka & North Interior Karnataka.
- ❖ **Duststorm** very likely at isolated places over Uttar Pradesh and East Rajasthan.
- ❖ **Squally weather with wind speed 35 kmph to 45 kmph gusting to 55 kmph** very likely to prevail over Gulf of Mannar & adjoining Comorin area, along and off Tamil Nadu coast. Fishermen are advised not to venture into these areas.

**13<sup>th</sup> April (Day 2):**

- ❖ **Heavy rainfall ( $\geq 7$  cm)** very likely at isolated places over Assam & Meghalaya.
- ❖ **Thundersquall accompanied with lightning, gusty winds (speed reaching 50 - 60 kmph)** very likely at isolated places over Gangetic West Bengal; **Thunderstorm accompanied with lightning & gusty winds (speed reaching 40 - 50 kmph)** at isolated places over Jharkhand, Bihar, Madhya Pradesh, Assam & Meghalaya; **with lightning & gusty winds (speed reaching 30 - 40 kmph)** at isolated places over East Uttar Pradesh, Chhattisgarh, Sub-Himalayan West Bengal & Sikkim, Odisha, Nagaland, Manipur, Mizoram & Tripura, Madhya Maharashtra, Marathwada, Kerala & Mahe, Coastal Andhra Pradesh & Yanam, Rayalaseema, Telangana, South Interior Karnataka; **with lightning** at isolated places over Arunachal Pradesh, Tamil Nadu, Puducherry & Karaikal, Coastal & North Interior Karnataka.
- ❖ **Heat wave conditions** very likely at isolated places over Coastal Andhra Pradesh & Yanam.

#### 14<sup>th</sup> April (Day 3):

- ❖ **Heavy rainfall ( $\geq 7$  cm)** likely at isolated places over Odisha, Arunachal Pradesh, Assam & Meghalaya.
- ❖ **Thunderstorm accompanied with lightning, gusty winds (speed reaching 40 - 50 kmph)** very likely at isolated places over Gangetic West Bengal, Bihar, Jharkhand; **with lightning & gusty winds (speed reaching 30 - 40 kmph)** at isolated places over Vidarbha, Chhattisgarh, Odisha, Assam & Meghalaya, Nagaland, Manipur, Mizoram & Tripura, Madhya Maharashtra, Marathwada, Kerala & Mahe, Coastal Andhra Pradesh & Yanam, Telangana and South Interior Karnataka; **with lightning** at isolated places over Arunachal Pradesh, Coastal Karnataka & North Interior Karnataka.
- ❖ **Heat wave conditions** very likely in isolated pockets over West Rajasthan.
- ❖ **Squally weather with wind speed 45 kmph to 50 kmph gusting to 55 kmph** very likely to prevail along and off south Gujarat and north Maharashtra coasts. Fishermen are advised not to venture into these areas.

#### 15<sup>th</sup> April (Day 4):

- ❖ **Heavy rainfall ( $\geq 7$  cm)** likely at isolated places over Odisha.
- ❖ **Thunderstorm accompanied with lightning, gusty winds (speed reaching 40 - 50 kmph) & hailstorm** likely at isolated places over Jharkhand; **with lightning & gusty winds (speed reaching 40 - 50 kmph)** at isolated places over Chhattisgarh, Odisha; **with lightning & gusty winds (speed reaching 30 - 40 kmph)** at isolated places over Vidarbha, Sub-Himalayan West Bengal & Sikkim, Bihar; **with lightning** at isolated places over Uttarakhand, Gangetic West Bengal and Kerala & Mahe.
- ❖ **Heat wave** likely in isolated pockets over West Rajasthan and Gujarat state.

#### 16<sup>th</sup> April (Day 5):

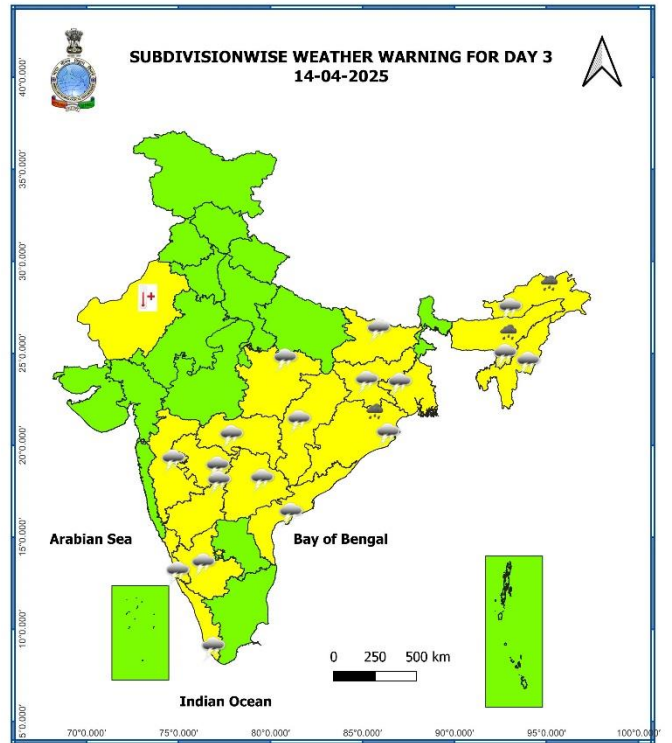
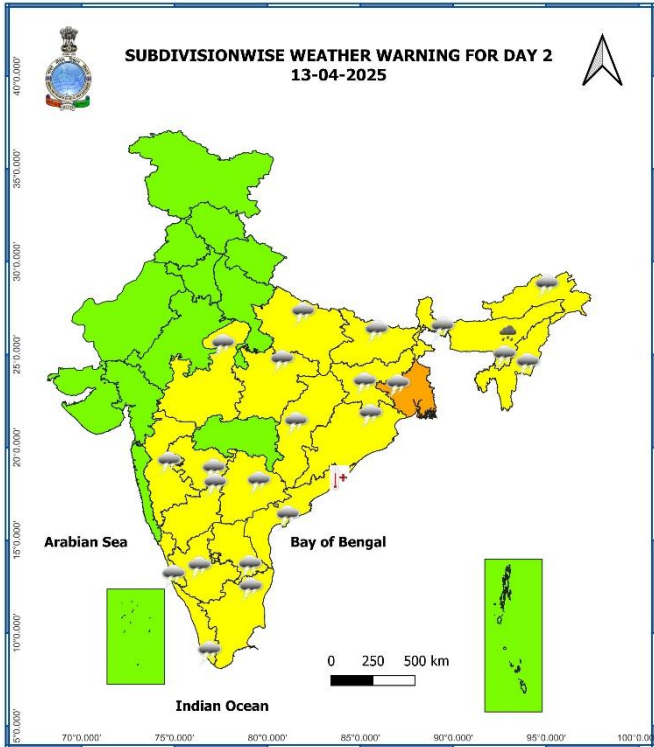
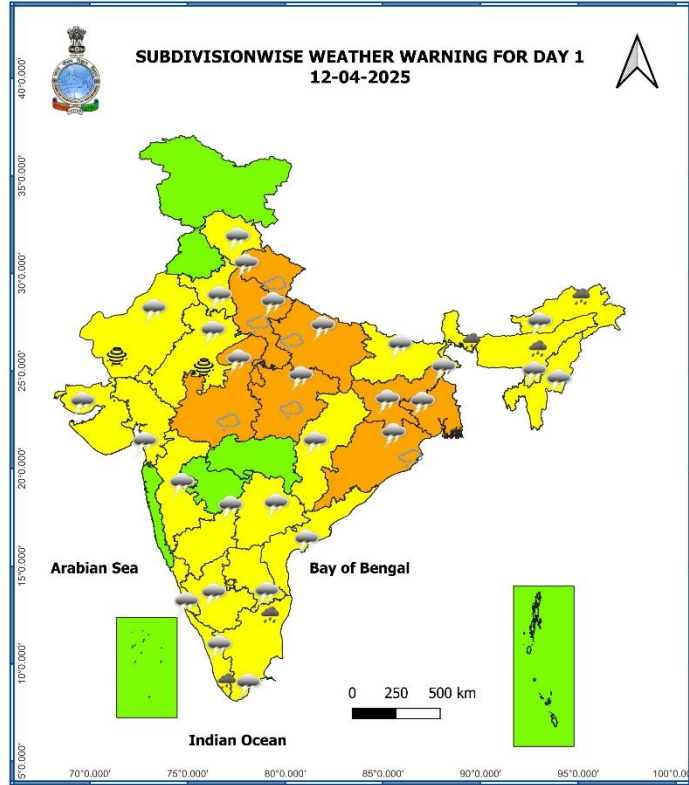
- ❖ **Thunderstorm accompanied with lightning & gusty winds (speed reaching 40 - 50 kmph)** likely at isolated places over Odisha, Jharkhand, Chhattisgarh; **with lightning & gusty winds (speed reaching 30 - 40 kmph)** at isolated places over Bihar, Vidarbha, Sub-Himalayan West Bengal & Sikkim; **with lightning** at isolated places over Uttarakhand, Gangetic West Bengal and Kerala & Mahe.
- ❖ **Heat wave at some places with severe Heat wave conditions** likely in isolated pockets of West Rajasthan; **Heat wave conditions** in isolated pockets over Punjab, Haryana-Chandigarh-Delhi, East Rajasthan, West Madhya Pradesh and Gujarat state.

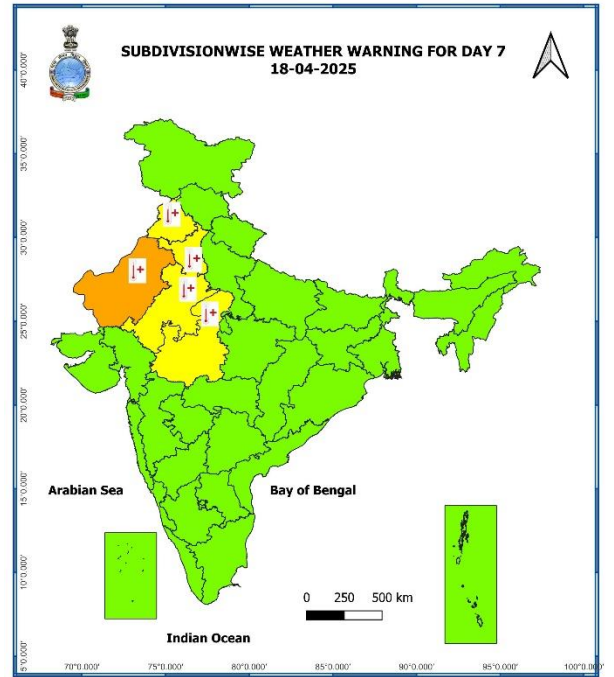
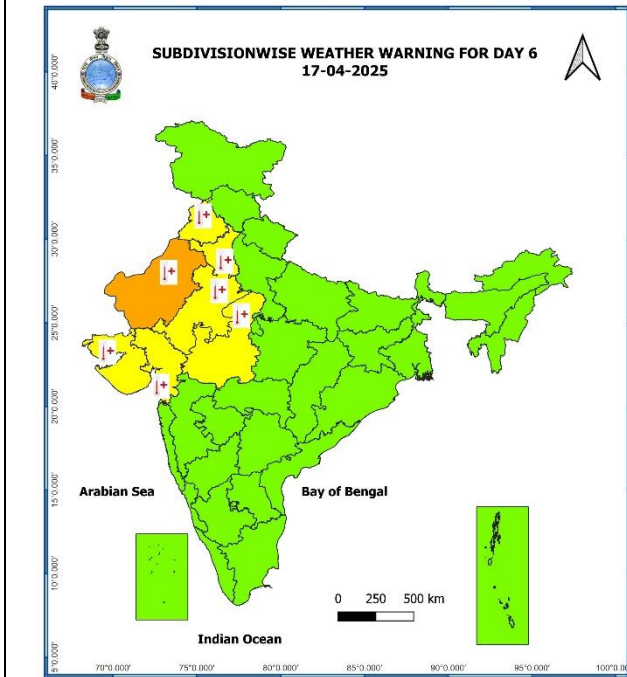
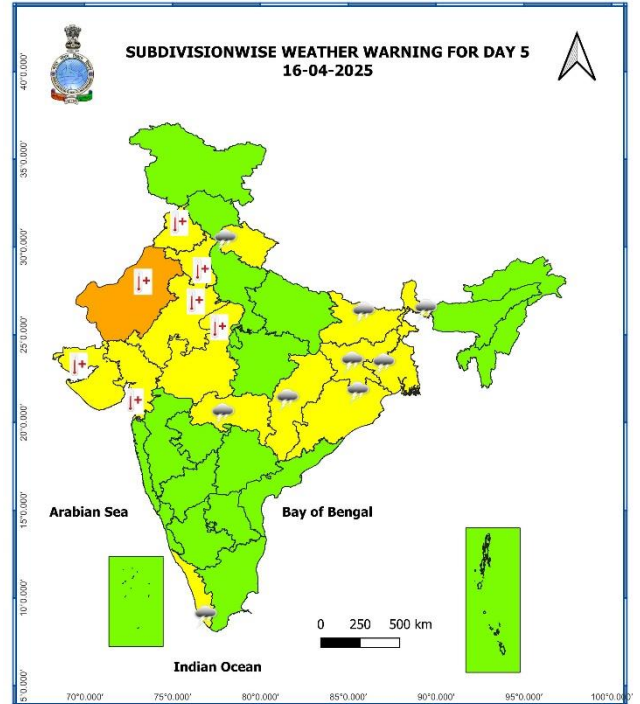
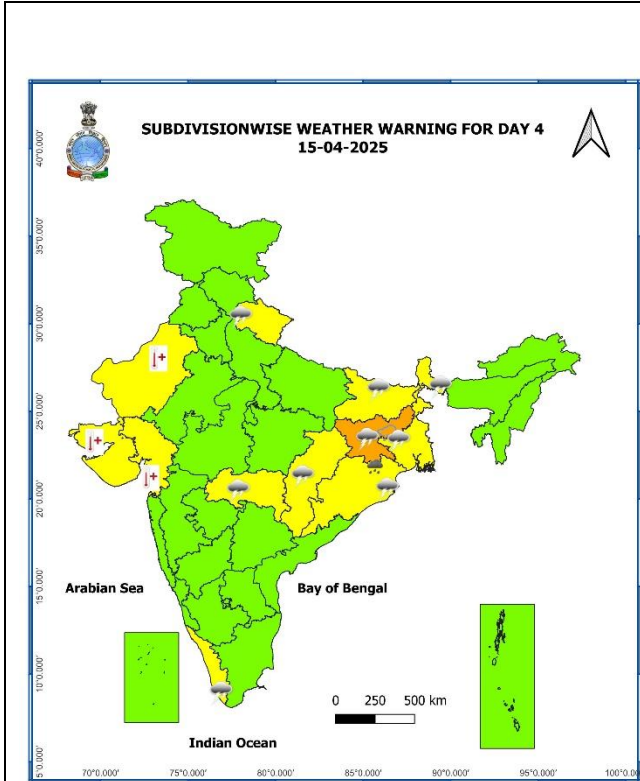
#### 17<sup>th</sup> April (Day 6):

- ❖ **Heat wave at some places with severe Heat wave conditions** likely in isolated pockets of West Rajasthan; **Heat wave conditions** in isolated pockets over Punjab, Haryana-Chandigarh-Delhi, East Rajasthan, West Madhya Pradesh and Gujarat state.

#### 18<sup>th</sup> April (Day 7):

- ❖ **Heat wave at some places with severe Heat wave conditions** likely in isolated pockets of West Rajasthan; **Heat wave to severe Heat wave conditions** in isolated pockets of East Rajasthan; **Heat wave conditions** in isolated pockets over Punjab, Haryana-Chandigarh-Delhi and West Madhya Pradesh.





- Action may be taken based on **ORANGE AND RED** COLOUR warnings.
- Vulnerable regions likely urban and hilly areas action may be initiated for heavy rainfall warning.
- As the lead period increases forecast accuracy decreases.



Table-1

| 7 Days Rainfall Forecast |                                      |        |        |        |        |        |        |        |
|--------------------------|--------------------------------------|--------|--------|--------|--------|--------|--------|--------|
| S. No.                   | Subdivision                          | 12-Apr | 13-Apr | 14-Apr | 15-Apr | 16-Apr | 17-Apr | 18-Apr |
|                          |                                      | Day 1  | Day 2  | Day 3  | Day 4  | Day 5  | Day 6  | Day 7  |
| 1                        | ANDAMAN & NICOBAR ISLANDS            | WS     | FWS    | SCT    | SCT    | SCT    | FWS    | SCT    |
| 2                        | ARUNACHAL PRADESH                    | FWS    | SCT    | SCT    | SCT    | FWS    | FWS    | SCT    |
| 3                        | ASSAM & MEGHALAYA                    | FWS    | FWS    | FWS    | FWS    | WS     | WS     | WS     |
| 4                        | NAGALAND, MANIPUR, MIZORAM & TRIPURA | FWS    | FWS    | FWS    | SCT    | FWS    | FWS    | FWS    |
| 5                        | SUB-HIMALAYAN WEST BENGAL & SIKKIM   | FWS    | FWS    | SCT    | SCT    | FWS    | SCT    | SCT    |
| 6                        | GANGETIC WEST BENGAL                 | FWS    | FWS    | SCT    | SCT    | SCT    | SCT    | FWS    |
| 7                        | ODISHA                               | ISOL   | ISOL   | SCT    | FWS    | FWS    | SCT    | SCT    |
| 8                        | JHARKHAND                            | ISOL   | FWS    | FWS    | FWS    | FWS    | SCT    | SCT    |
| 9                        | BIHAR                                | SCT    | SCT    | SCT    | SCT    | SCT    | ISOL   | ISOL   |
| 10                       | EAST UTTAR PRADESH                   | SCT    | ISOL   | ISOL   | ISOL   | ISOL   | ISOL   | SCT    |
| 11                       | WEST UTTAR PRADESH                   | SCT    | ISOL   | DRY    | DRY    | DRY    | DRY    | ISOL   |
| 12                       | UTTARAKHAND                          | FWS    | ISOL   | DRY    | ISOL   | ISOL   | SCT    | FWS    |
| 13                       | HARYANA CHANDIGARH & DELHI           | ISOL   | DRY    | DRY    | DRY    | DRY    | DRY    | ISOL   |
| 14                       | PUNJAB                               | ISOL   | DRY    | DRY    | DRY    | DRY    | DRY    | ISOL   |
| 15                       | HIMACHAL PRADESH                     | SCT    | DRY    | DRY    | DRY    | ISOL   | ISOL   | SCT    |
| 16                       | JAMMU & KASHMIR AND LADAKH           | ISOL   | DRY    | DRY    | DRY    | ISOL   | ISOL   | SCT    |
| 17                       | WEST RAJASTHAN                       | ISOL   | DRY    | DRY    | DRY    | DRY    | DRY    | DRY    |
| 18                       | EAST RAJASTHAN                       | ISOL   | DRY    | DRY    | DRY    | DRY    | DRY    | DRY    |
| 19                       | WEST MADHYA PRADESH                  | ISOL   | ISOL   | DRY    | DRY    | DRY    | DRY    | DRY    |
| 20                       | EAST MADHYA PRADESH                  | ISOL   | ISOL   | ISOL   | DRY    | DRY    | DRY    | DRY    |
| 21                       | GUJARAT REGION                       | ISOL   | DRY    | DRY    | DRY    | DRY    | DRY    | DRY    |
| 22                       | SAURASHTRA & KUTCH                   | ISOL   | DRY    | DRY    | DRY    | DRY    | DRY    | DRY    |
| 23                       | KONKAN & GOA                         | ISOL   | ISOL   | ISOL   | ISOL   | DRY    | DRY    | DRY    |
| 24                       | MADHYA MAHARASHTRA                   | ISOL   | ISOL   | ISOL   | ISOL   | ISOL   | DRY    | DRY    |
| 25                       | MARATHAWADA                          | ISOL   | ISOL   | ISOL   | ISOL   | ISOL   | DRY    | DRY    |
| 26                       | VIDARBHA                             | ISOL   | ISOL   | ISOL   | ISOL   | ISOL   | DRY    | DRY    |
| 27                       | CHHATTISGARH                         | ISOL   | ISOL   | ISOL   | ISOL   | ISOL   | ISOL   | ISOL   |
| 28                       | COASTAL ANDHRA PRADESH & YANAM       | ISOL   | ISOL   | ISOL   | ISOL   | ISOL   | ISOL   | ISOL   |
| 29                       | TELANGANA                            | ISOL   | ISOL   | ISOL   | ISOL   | ISOL   | DRY    | DRY    |
| 30                       | RAYALASEEMA                          | ISOL   | ISOL   | ISOL   | ISOL   | ISOL   | ISOL   | ISOL   |
| 31                       | TAMILNADU PUDUCHERRY & KARAIKAL      | SCT    | ISOL   | ISOL   | ISOL   | ISOL   | ISOL   | ISOL   |
| 32                       | COASTAL KARNATAKA                    | SCT    | ISOL   | ISOL   | SCT    | SCT    | SCT    | ISOL   |
| 33                       | NORTH INTERIOR KARNATAKA             | ISOL   | ISOL   | ISOL   | ISOL   | ISOL   | ISOL   | ISOL   |
| 34                       | SOUTH INTERIOR KARNATAKA             | SCT    | ISOL   | ISOL   | SCT    | SCT    | SCT    | ISOL   |
| 35                       | KERALA & MAHE                        | SCT    | SCT    | FWS    | FWS    | FWS    | FWS    | FWS    |
| 36                       | LAKSHADWEEP                          | SCT    | DRY    | DRY    | DRY    | DRY    | DRY    | DRY    |

• As the lead period increases forecast accuracy decreases.

**Impact expected and action suggested due to isolated thunderstorm with lightning/gusty winds & Hailstorm over Gangetic West Bengal on 12<sup>th</sup> & 13<sup>th</sup>; Uttarakhand, Madhya Pradesh, Rajasthan and Uttar Pradesh on 12<sup>th</sup> and Jharkhand on 15<sup>th</sup> April.**

**Impact expected:**

- Strong wind/hail may damage plantation, horticulture and standing crops.
- Hail may injure people and cattle at open places.
- Partial damage to vulnerable structures due to strong winds.
- Minor damage to kutcha houses/walls and huts.
- Loose objects may fly.

**Action suggested:**

- Stay indoors, close windows & doors and avoid travel if possible.
- Take safe shelters; do not take shelter under trees.
- Do not lie on concrete floors and do not lean against concrete walls.
- Unplug electrical/ electronic appliances.
- Immediately get out of water bodies.
- Keep away from all the objects that conduct electricity.

**Impact expected and action suggested due to Heat wave to severe heat wave conditions likely at many parts of West Rajasthan during 16<sup>th</sup>-18<sup>th</sup> April.**

**Red alert Areas**

- Very high likelihood of developing heat illness and heat stroke in all ages.
- Extreme care needed for vulnerable people.

**Orange alert Areas**

- High temperature & increased likelihood of heat illness symptoms in people who are either exposed to sun for a prolonged period or doing heavy work.
- High health concern for vulnerable people e.g. infants, elderly, people with chronic diseases.
- Avoid heat exposure– keep cool. Avoid dehydration.
- Drink sufficient water- even if not thirsty.
- Use ORS, homemade drinks like lassi, torani (rice water), lemon water, buttermilk, etc. to keep yourself hydrated.

**Yellow alert Areas**

- Moderate temperature & heat is tolerable for general public but moderate health concern likely for vulnerable people e.g. infants, elderly, people with chronic diseases.
- Avoid heat exposure.
- Wear lightweight, light colour, loose, cotton clothes.
- Cover your head, use a cloth, hat or umbrella.



## Agromet advisories for likely impact of Hailstorm / Heavy Rainfall / Gusty Winds

- In **Uttarakhand, Uttar Pradesh and Madhya Pradesh**, immediately shift the harvested produce in safer places or cover the produce with tarpaulin sheets in the fields to avoid the adverse impact of likely hailstorm. Use hail net and hail caps to prevent mechanical damage in orchards due to hailstorms.
- In **Arunachal Pradesh, Meghalaya, Sub Himalayan West Bengal and Sikkim**, immediately harvest the mature crops, fruits and vegetables and shift the harvested produce in safer places or cover the produce with tarpaulin sheets in the fields. Also make provision to drain out excess water from standing crop and vegetable fields.
- In **Odisha**, make necessary arrangements to drain out excess water from standing crop and vegetable fields. Harvest the mature crops, fruits and vegetables and shift the harvested produce in safer places.
- In **Tamil Nadu and Kerala**, drain out excess water from standing crop and vegetable fields.
- Provide mechanical support to horticultural crops and staking to vegetables to avoid lodging.

### Livestock / Fishery

- Keep the animals inside the shed during heavy rainfall / hailstorm and provide them balanced feed.
- Store feed and fodder in a safe place to prevent spoilage.
- Construct an outlet with proper netting around the ponds to drain out excess water, thereby preventing fish from escaping in case of overflow.

### DEFINITION/CRITERIA

|                        |  |
|------------------------|--|
| <b>Rain/ Snow *</b>    | <b>Heavy:</b> 64.5 to 115.5 mm/cm *<br><b>Very Heavy:</b> 115.6 to 204.4 mm/cm*<br><b>Extremely Heavy:</b> > 204.4 mm/cm *   |
| <b>Heat Wave</b>       | <b>When maximum temperature of a station reaches <math>\geq 40^{\circ}\text{C}</math> for plains and <math>\geq 30^{\circ}\text{C}</math> for hilly regions</b><br><b>(a) Based on Departure from normal</b><br><b>Heat Wave:</b> Maximum Temperature Departure from normal $4.5^{\circ}\text{C}$ to $6.4^{\circ}\text{C}$ .<br><b>Severe Heat Wave:</b> Maximum Temperature Departure from normal $\geq 6.5^{\circ}\text{C}$<br><b>(b). Based on Actual maximum temperature</b><br><b>Heat Wave:</b> When actual maximum temperature $\geq 45^{\circ}\text{C}$ .<br><b>Severe Heat Wave:</b> When actual maximum temperature $\geq 47^{\circ}\text{C}$<br><b>(c). Criteria for heat wave for coastal stations</b><br>When maximum temperature departure is $> 4.5^{\circ}\text{C}$ from normal. Heat Wave may be described provided maximum temperature $\geq 37^{\circ}\text{C}$ |
| <b>Warm Night</b>      | <b>When maximum temperature remains <math>40^{\circ}\text{C}</math></b><br><b>Warm Night:</b> When minimum temperature departure $4.5^{\circ}\text{C}$ to $6.4^{\circ}\text{C}$ .<br><b>Severe Warm Night:</b> When minimum temperature departure $> 6.4^{\circ}\text{C}$ .  |
| <b>Cold Wave</b>       | <b>When minimum temperature of a station <math>\leq 10^{\circ}\text{C}</math> for plains and <math>\leq 0^{\circ}\text{C}</math> for hilly regions.</b><br><b>(a). Based on departure</b><br><b>Cold Wave:</b> Minimum Temperature Departure from normal $-4.5^{\circ}\text{C}$ to $-6.4^{\circ}\text{C}$ .<br><b>Severe Cold Wave:</b> Minimum Temperature Departure from normal $\leq -6.5^{\circ}\text{C}$<br><b>(b) Based on actual Minimum Temperature (for Plains only)</b><br><b>Cold Wave :</b> When Minimum Temperature is $\leq 4.0^{\circ}\text{C}$<br><b>Severe Cold Wave:</b> When Minimum Temperature is $\leq 2.0^{\circ}\text{C}$<br><b>(c) For Coastal Stations</b><br>When Minimum Temperature departure is $\leq -4.5^{\circ}\text{C}$ & actual Minimum Temperature is $\leq 15^{\circ}\text{C}$  |
| <b>Cold Day</b>        | <b>When minimum temperature of a station <math>\leq 10^{\circ}\text{C}</math> for plains and <math>\leq 0^{\circ}\text{C}</math> for hilly regions</b><br><b>Based on departure</b><br><b>Cold Day:</b> Maximum Temperature Departure from normal $-4.5^{\circ}\text{C}$ to $-6.4^{\circ}\text{C}$ .<br><b>Severe Cold Day:</b> Maximum Temperature Departure from normal $\leq -6.5^{\circ}\text{C}$  |
| <b>Fog</b>             | <b>Phenomenon of small droplets suspended in air and the horizontal visibility <math>&lt; 1\text{km}</math></b><br><b>Moderate Fog:</b> When the visibility between 500-200 metres<br><b>Dense Fog:</b> when the visibility between 50- 200 metres<br><b>Very Dense Fog:</b> when the visibility $< 50$ metres   |
| <b>Thunderstorm</b>    | Sudden electrical discharges manifested by a flash of light (Lightning) and a sharp rumbling sound (thunder)   |
| <b>Dust/Sand Storm</b> | An ensemble of particles of dust or sand energetically lifted to great heights by a strong and turbulent wind.   |
| <b>Frost</b>           | <b>Ice deposits on ground</b><br>Air temperature $\leq 4^{\circ}\text{C}$ ( over Plains)   |
| <b>Squall</b>          | <b>A strong wind that rises suddenly, lasts for atleast 1 minute.</b><br><b>Moderate:</b> Wind speed 52-61 kmph<br><b>Severe:</b> Wind speed 62-87 kmph<br><b>Very Severe:</b> Wind speed $> 87$ kmph  |
| <b>Sea State</b>       | <b>Effect of various waves in the sea over specific area</b><br><b>Rough to very rough:</b> Wind speed 41-62 kmph (22-33 knots) & Wave height 2.5-6 metre<br><b>High to very high:</b> Wind speed 63-117 kmph ( 34-63 knots) & Wave height 6-14 metre<br><b>Phenomenal:</b> Wind speed $> 117$ kmph ( $> 63$ knots) & Wave height $> 14$ metre   |
| <b>Cyclone</b>         | <b>Cyclonic Storm:</b> Wind speed 62-87 kmph (34-47 knots)<br><b>Severe Cyclonic Storm:</b> Wind speed 88-117 kmph (48-63 knots)<br><b>Very Severe Cyclonic Storm:</b> Wind speed 118-165 kmph (64 - 89 knots)<br><b>Extremely Severe Cyclonic Storm:</b> Wind speed 166-220 kmph (90 -119 knots)<br><b>Super Cyclone Storm:</b> Wind speed $> 220$ kmph ( $> 119$ knots)  |

\* Red colour warning does not mean "Red Alert", Red colour warning means "Take Action".  
 Forecast and Warning for any day is valid from 0830 hours IST of day till 0830 hours IST of next day.  
 For more details, kindly visit <https://mausam.imd.gov.in> or contact: 011-2434-4599  
 (Service to the Nation since 1875)

**Hot and Humid:** When maximum temperatures remains  $3^{\circ}\text{C}$  above normal along with the above normal relative humidity.