

Thursday, April 10, 2025
Time of Issue: 2000 hours IST
(NIGHT)

All India Impact Based Weather Warning Bulletin

Weather Warnings for next 7 days is given below:

(Graphics for warnings & rainfall distribution (Table 1) are given below the text:

10th April (Day 1):

- ❖ **Heavy rainfall** very likely at isolated places over Sub-Himalayan West Bengal & Sikkim, Bihar, Arunachal Pradesh, Assam & Meghalaya, Tamil Nadu, Puducherry & Karaikal and Kerala & Mahe.
- ❖ **Thundersquall accompanied with lightning, gusty Winds (speed reaching 50 - 60 kmph) & hailstorm** very likely at isolated places over Uttarakhand, Punjab, Haryana-Chandigarh-Delhi and East Uttar Pradesh; **Thundersquall accompanied with lightning, gusty Winds (speed reaching 50 - 60 kmph)** likely at isolated places over Sub-Himalayan West Bengal & Sikkim, Bihar; **Thunderstorm accompanied with lightning, gusty Winds (speed reaching 40 - 50 kmph) & hailstorm** at isolated places over East Madhya Pradesh, Chhattisgarh, Jharkhand ; **with lightning & gusty Winds (speed reaching 30 - 40 kmph) & hailstorm** at isolated places over Jammu-Kashmir-Ladakh-Gilgit-Baltistan-Muzaffarabad, Himachal Pradesh, Assam & Meghalaya; **with lightning & gusty Winds (speed reaching 40 - 50 kmph)** at isolated places over Rajasthan, west Madhya Pradesh, Vidarbha, Gangetic West Bengal, Nagaland, Manipur, Mizoram & Tripura and South Interior Karnataka; **with lightning & gusty Winds (speed reaching 30 - 40 kmph)** at isolated places over West Uttar Pradesh, Arunachal Pradesh, Coastal Andhra Pradesh & Yanam, Telangana, Rayalaseema and Kerala & Mahe; **with lightning** at isolated places over Coastal Karnataka and North Interior Karnataka .
- ❖ **Duststorm** very likely at isolated places over Rajasthan.
- ❖ **Heat wave conditions** very likely in isolated pockets over south Haryana, Rajasthan, Madhya Pradesh and Gujarat state.
- ❖ **Hot and humid conditions** very likely in isolated places over Konkan & Goa, Gujarat state,
- ❖ **Warm night conditions** very likely to prevail in isolated pockets over Marathwada.
- ❖ **Squally weather with Wind speed 35 kmph to 45 kmph gusting to 55 kmph** likely to prevail over westcentral & northeast Bay of Bengal, over gulf of Mannar & adjoining Comorin area along and off Tamil Nadu coasts, along and off Sri Lanka coasts adjoining parts of southwest Bay of Bengal. **Squally Wind with Wind speed 45 kmph to 50 kmph gusting to 55 kmph** likely to prevail along and off Oman coasts.

11th April (Day 2):

- ❖ **Heavy rainfall** very likely at isolated places over Sub-Himalayan West Bengal & Sikkim, Bihar, Arunachal Pradesh, Assam & Meghalaya and Kerala & Mahe.
- ❖ **Thundersquall accompanied with lightning, gusty Winds (speed reaching 50 - 60 kmph) & hailstorm** very likely at isolated places over Uttarakhand, Punjab; **Thundersquall accompanied with lightning, gusty Winds (speed reaching 50 - 60 kmph)** likely at isolated places over Sub-Himalayan West Bengal & Sikkim; **Thunderstorm accompanied with lightning, gusty Winds (speed reaching 40 - 50 kmph) & hailstorm** at isolated places over East Madhya Pradesh; **with lightning & gusty Winds (speed reaching 30 - 40 kmph) & hailstorm** at isolated places over Jammu-Kashmir-Ladakh-Gilgit-Baltistan-Muzaffarabad, Himachal Pradesh; **with lightning & gusty Winds (speed reaching 40 - 50 kmph)** at isolated places over East Uttar Pradesh, West Madhya Pradesh, Vidarbha, Chhattisgarh, Bihar, Jharkhand, Odisha and Assam & Meghalaya; **with lightning & gusty Winds (speed reaching 30 - 40 kmph)** at isolated places over West Uttar Pradesh, Kerala & Mahe, Coastal Andhra Pradesh & Yanam, Telangana; **with lightning** at isolated places over Arunachal Pradesh, Tamil Nadu, Puducherry & Karaikal and Karnataka.
- ❖ **Duststorm** very likely at isolated places over Rajasthan.
- ❖ **Squally weather with Wind speed 35 kmph to 45 kmph gusting to 55 kmph** likely to prevail over gulf of Mannar & adjoining Comorin area, along and off Tamil Nadu coast, along and off Sri Lanka coast and adjoining southwest Bay of Bengal. **Squally Wind with Wind speed 45 kmph to 50 kmph gusting to 55 kmph** likely to prevail along and off Oman coasts.

12th April (Day 3):

- ❖ **Heavy rainfall** very likely at isolated places over Sub-Himalayan West Bengal & Sikkim, Arunachal Pradesh, and Kerala & Mahe.
- ❖ **Thunderstorm accompanied with lightning, gusty winds (speed reaching 40 - 50 kmph)** at isolated places over East Uttar Pradesh, East Madhya Pradesh, West Bengal & Sikkim, Jharkhand and Assam & Meghalaya; **with lightning & gusty winds (speed reaching 30 - 40 kmph)** at isolated places over East Rajasthan, West Madhya Pradesh, Vidarbha, Chhattisgarh, Bihar, Odisha, Nagaland, Manipur, Mizoram & Tripura, Coastal Andhra Pradesh & Yanam, Rayalaseema and Telangana; **with lightning** at isolated places over East Rajasthan, Arunachal Pradesh, Tamil Nadu, Puducherry & Karaikal and Karnataka.
- ❖ **Duststorm** very likely at isolated places over east Rajasthan.
- ❖ **Squally weather with wind speed 35 kmph to 45 kmph gusting to 55 kmph** likely to prevail over Gulf of Mannar & adjoining Comorin area.

13th April (Day 4):

- ❖ **Heavy rainfall** very likely at isolated places over Assam & Meghalaya.
- ❖ **Thundersquall accompanied with lightning, gusty winds (speed reaching 50 - 60 kmph)** likely at isolated places over Gangetic West Bengal; **Thunderstorm accompanied with lightning, gusty winds (speed reaching 40 - 50 kmph)** at isolated places over Coastal Karnataka, Assam & Meghalaya; **with lightning & gusty winds (speed reaching 30 - 40 kmph)** at isolated places over East Uttar Pradesh, Bihar, Jharkhand, Odisha, Nagaland, Manipur, Mizoram & Tripura, Coastal Andhra Pradesh & Yanam; **with lightning** at isolated places over Vidarbha and Arunachal Pradesh.
- ❖ **Squally weather with wind speed 35 kmph to 45 kmph gusting to 55 kmph** likely to prevail over Gulf of Mannar; adjoining Comorin area. Fishermen are advised not to venture into these areas.

14th April (Day 5):

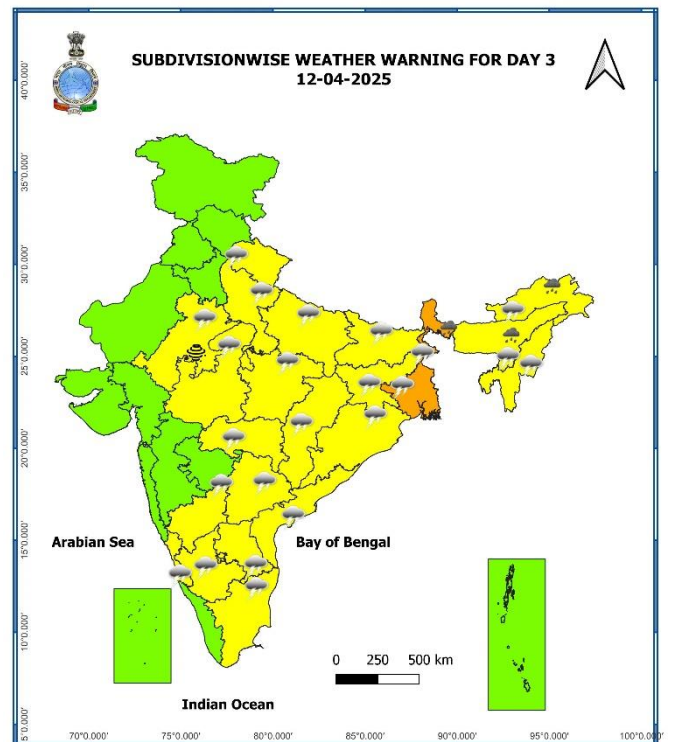
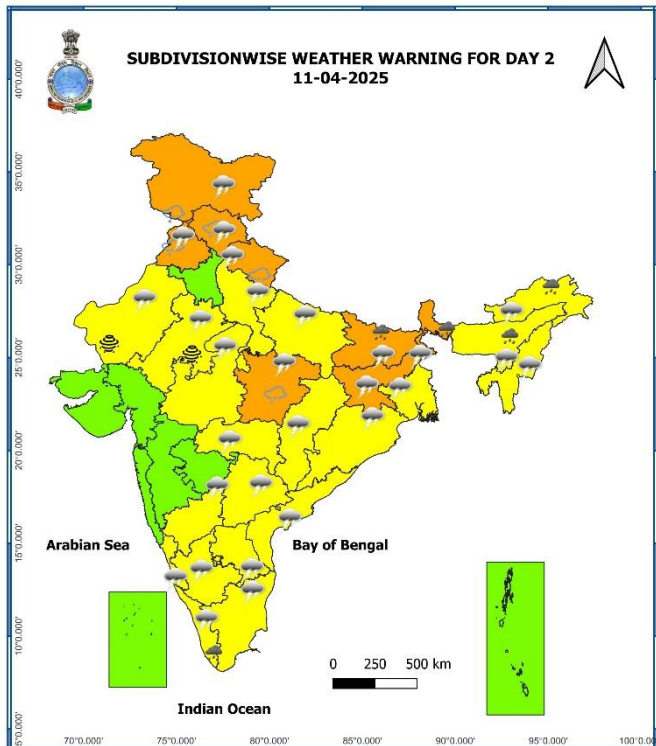
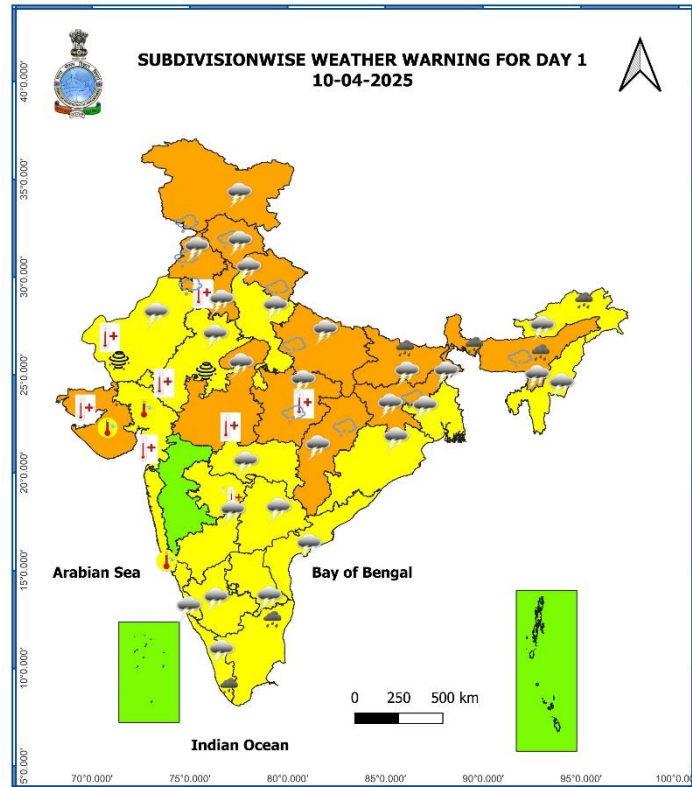
- ❖ **Heat wave conditions** very likely in isolated pockets over west Rajasthan.
- ❖ **Thundersquall accompanied with lightning, gusty winds (speed reaching 40 - 50 kmph)** at isolated places over Assam & Meghalaya, Gangetic West Bengal; **with lightning & gusty winds (speed reaching 30 - 40 kmph)** at isolated places over Bihar, Chhattisgarh and Nagaland, Manipur, Mizoram & Tripura.

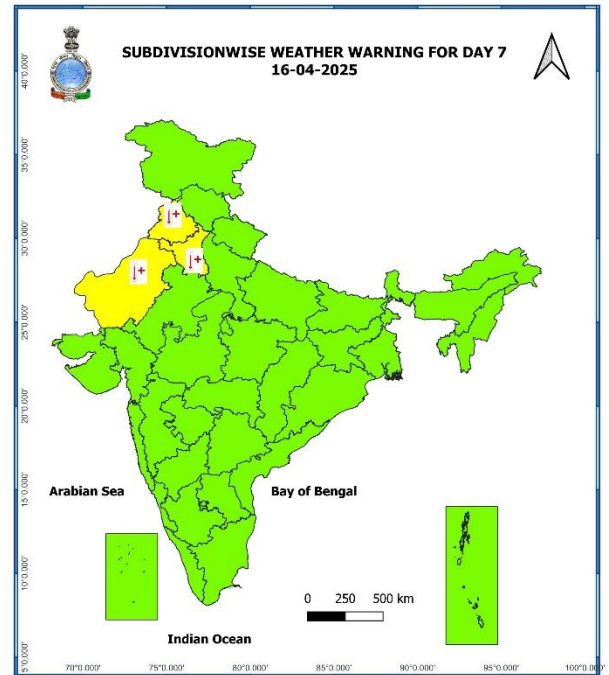
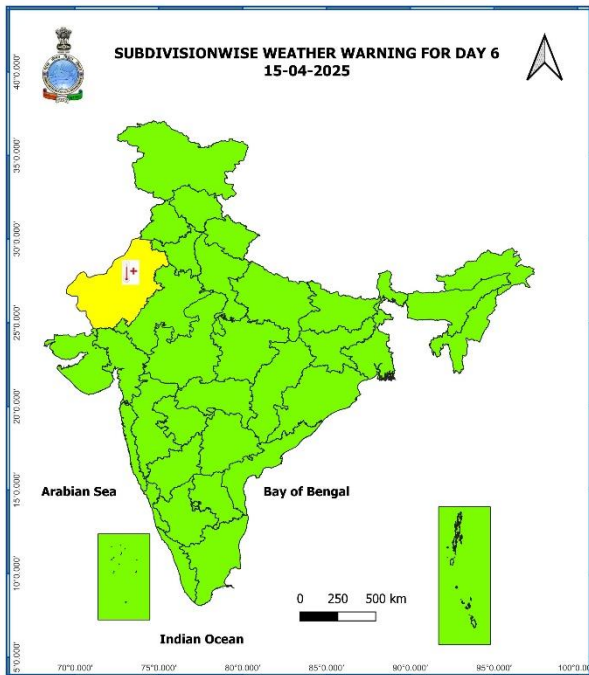
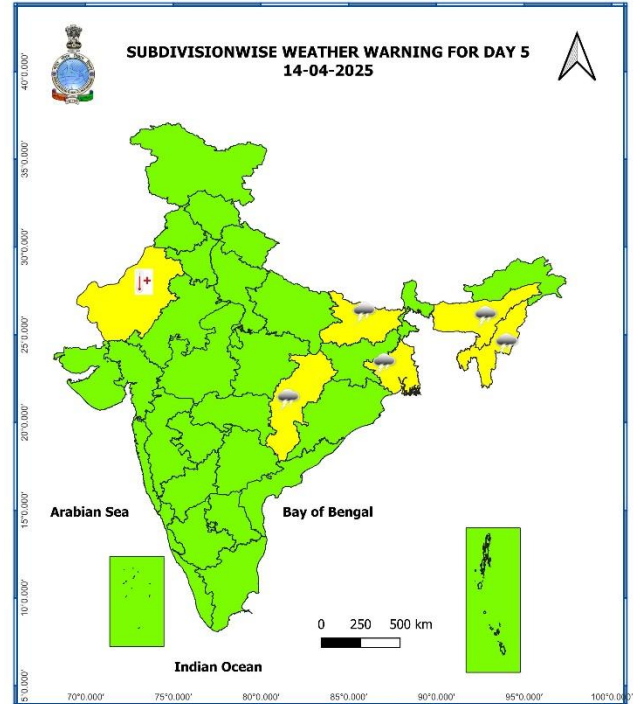
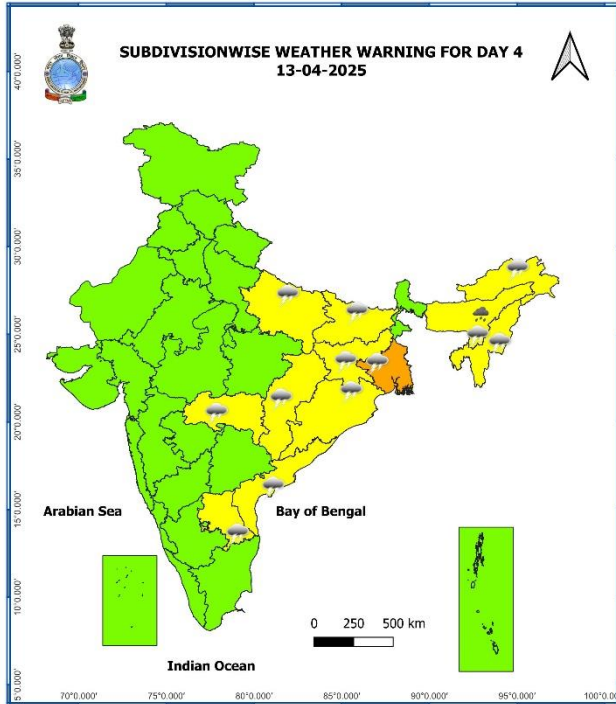
15th April (Day 6):

- ❖ **Heat wave conditions** likely in isolated pockets over West Rajasthan.

16th April (Day 7):

- ❖ **Heat wave conditions** likely in isolated pockets over Punjab, Haryana, Delhi and West Rajasthan.





- Action may be taken based on **ORANGE AND RED** COLOUR warnings.
- Vulnerable regions likely urban and hilly areas action may be initiated for heavy rainfall warning.
- As the lead period increases forecast accuracy decreases.

Table-1

7 Days Rainfall Forecast

S. No.	Subdivision	10-Mar	11-Mar	12-Mar	13-Mar	14-Mar	15-Mar	16-Mar
		Day 1	Day 2	Day 3	Day 4	Day 5	Day 6	Day 7
1	ANDAMAN & NICOBAR ISLANDS	FWS	WS	FWS	SCT	SCT	SCT	SCT
2	ARUNACHAL PRADESH	FWS	FWS	FWS	FWS	FWS	SCT	SCT
3	ASSAM & MEGHALAYA	FWS	FWS	FWS	FWS	FWS	SCT	SCT
4	NAGALAND, MANIPUR, MIZORAM & TRIPURA	SCT	SCT	SCT	SCT	SCT	SCT	SCT
5	SUB-HIMALAYAN WEST BENGAL & SIKKIM	WS	FWS	FWS	FWS	SCT	SCT	FWS
6	GANGETIC WEST BENGAL	SCT	SCT	SCT	FWS	SCT	SCT	SCT
7	ODISHA	SCT	ISOL	ISOL	ISOL	ISOL	ISOL	ISOL
8	JHARKHAND	SCT	SCT	ISOL	SCT	SCT	SCT	SCT
9	BIHAR	WS	SCT	SCT	ISOL	ISOL	ISOL	ISOL
10	EAST UTTAR PRADESH	FWS	SCT	SCT	ISOL	DRY	DRY	DRY
11	WEST UTTAR PRADESH	ISOL	ISOL	ISOL	DRY	DRY	DRY	DRY
12	UTTARAKHAND	FWS	WS	FWS	ISOL	DRY	DRY	ISOL
13	HARYANA CHANDIGARH & DELHI	ISOL	SCT	DRY	DRY	DRY	DRY	DRY
14	PUNJAB	ISOL	SCT	ISOL	DRY	DRY	DRY	DRY
15	HIMACHAL PRADESH	SCT	FWS	ISOL	DRY	DRY	DRY	DRY
16	JAMMU & KASHMIR AND LADAKH	FWS	FWS	ISOL	DRY	DRY	DRY	ISOL
17	WEST RAJASTHAN	ISOL	ISOL	DRY	DRY	DRY	DRY	DRY
18	EAST RAJASTHAN	ISOL	ISOL	ISOL	DRY	DRY	DRY	DRY
19	WEST MADHYA PRADESH	ISOL	ISOL	ISOL	ISOL	DRY	DRY	DRY
20	EAST MADHYA PRADESH	ISOL	ISOL	ISOL	ISOL	DRY	DRY	DRY
21	GUJARAT REGION	DRY	DRY	DRY	DRY	DRY	DRY	DRY
22	SAURASHTRA & KUTCH	DRY	DRY	DRY	DRY	DRY	DRY	DRY
23	KONKAN & GOA	ISOL	DRY	DRY	DRY	DRY	DRY	DRY
24	MADHYA MAHARASHTRA	DRY	DRY	DRY	ISOL	DRY	DRY	DRY
25	MARATHAWADA	ISOL	DRY	ISOL	DRY	DRY	DRY	DRY
26	VIDARBHA	ISOL	ISOL	ISOL	ISOL	ISOL	DRY	DRY
27	CHHATTISGARH	ISOL	ISOL	ISOL	ISOL	ISOL	ISOL	ISOL
28	COASTAL ANDHRA PRADESH & YANAM	ISOL	SCT	SCT	SCT	SCT	SCT	SCT
29	TELANGANA	ISOL	ISOL	ISOL	ISOL	ISOL	ISOL	ISOL
30	RAYALASEEMA	ISOL	SCT	SCT	ISOL	ISOL	ISOL	ISOL
31	TAMILNADU PUDUCHERRY & KARAIKAL	ISOL	ISOL	ISOL	ISOL	ISOL	ISOL	ISOL
32	COASTAL KARNATAKA	ISOL	ISOL	ISOL	ISOL	ISOL	ISOL	ISOL
33	NORTH INTERIOR KARNATAKA	ISOL	ISOL	ISOL	ISOL	ISOL	ISOL	ISOL
34	SOUTH INTERIOR KARNATAKA	ISOL	ISOL	ISOL	ISOL	ISOL	ISOL	ISOL
35	KERALA & MAHE	SCT	SCT	SCT	SCT	FWS	FWS	FWS
36	LAKSHADWEEP	FWS	FWS	SCT	DRY	DRY	DRY	DRY

• As the lead period increases forecast accuracy decreases.

Impact expected and action suggested due to Heat wave to severe heat wave conditions very likely at Rajasthan, south Haryana, Gujarat and Madhya Pradesh on 10th April.

Orange alert Areas

- High temperature & increased likelihood of heat illness symptoms in people who are either exposed to sun for a prolonged period or doing heavy work.
- High health concern for vulnerable people e.g. infants, elderly, people with chronic diseases.
- Avoid heat exposure– keep cool. Avoid dehydration.
- Drink sufficient water- even if not thirsty.
- Use ORS, homemade drinks like lassi, torani (rice water), lemon water, buttermilk, etc. to keep yourself hydrated.

Yellow alert Areas

- Moderate temperature & heat is tolerable for general public but moderate health concern likely for vulnerable people e.g. infants, elderly, people with chronic diseases.
- Avoid heat exposure.
- Wear lightweight, light colour, loose, cotton clothes.
- Cover your head, use a cloth, hat or umbrella.

Impact expected and action suggested due to isolated thunderstorm with lightning/gusty winds & Hailstorm over Haryana, East Uttar Pradesh, north Chhattisgarh, East Madhya Pradesh, Jharkhand, Assam & Meghalaya on 10th April; Jammu-Kashmir-Ladakh-Gilgit-Baltistan-Muzaffarabad, Himachal Pradesh, Uttarakhand and Punjab on 10th & 11th and Uttarakhand during 10th-12th April.

Impact expected:

- Strong wind/hail may damage plantation, horticulture and standing crops.
- Hail may injure people and cattle at open places.
- Partial damage to vulnerable structures due to strong winds.
- Minor damage to kutcha houses/walls and huts.
- Loose objects may fly.

Action suggested:

- Stay indoors, close windows & doors and avoid travel if possible.
- Take safe shelters; do not take shelter under trees.
- Do not lie on concrete floors and do not lean against concrete walls.
- Unplug electrical/ electronic appliances.
- Immediately get out of water bodies.
- Keep away from all the objects that conduct electricity.

Agromet advisories for likely impact of Hailstorm / Heavy Rainfall / Gusty Winds / Heatwave

- In **Assam & Meghalaya, Jharkhand, Jammu & Kashmir, Himachal Pradesh, Uttarakhand, Punjab, Haryana, East Uttar Pradesh and East Madhya Pradesh**, immediately shift the harvested produce in safer places or cover the produce with tarpaulin sheets in the fields to avoid the adverse impact of likely hailstorm. Use hail net and hail caps to prevent mechanical damage in orchards due to hailstorms.
- In **Arunachal Pradesh and Assam & Meghalaya**, immediately harvest the matured crops, fruits and vegetables and shift the harvested produce in safer places or cover the produce with tarpaulin sheets in the fields. Also make provision to drain out excess water from standing crop and vegetable fields.
- In **Bihar, Sub Himalayan West Bengal & Sikkim, Tamil Nadu and Kerala**, drain out excess water from standing crop and vegetable fields.
- In **Madhya Pradesh and Gujarat State**, apply light and frequent irrigation to standing crops in the evening to protect them from heat waves.
- Provide mechanical support to horticultural crops and staking to vegetables to avoid lodging.

Livestock / Poultry / Fishery

- Keep the animals inside the shed during heavy rainfall / hailstorm and provide them balanced feed.
 - Store feed and fodder in a safe place to prevent spoilage.
 - To reduce the effect of heat wave/high temperature, cover the roof of poultry sheds with grass. Also provide clean, hygienic and plenty of drinking water to animals.
- Construct an outlet with proper netting around the ponds to drain out excess water, thereby preventing fish from escaping in case of overflow

DEFINITION/CRITERIA

Rain/ Snow *

Heavy: 64.5 to 115.5 mm/cm *

Very Heavy: 115.6 to 204.4 mm/cm *

Extremely Heavy: > 204.4 mm/cm *

Heat Wave

When maximum temperature of a station reaches $\geq 40^{\circ}\text{C}$ for plains and $\geq 30^{\circ}\text{C}$ for hilly regions

(a) Based on Departure from normal

Heat Wave: Maximum Temperature Departure from normal 4.5°C to 6.4°C .

Severe Heat Wave: Maximum Temperature Departure from normal $\geq 6.5^{\circ}\text{C}$

(b). Based on Actual maximum temperature

Heat Wave: When actual maximum temperature $\geq 45^{\circ}\text{C}$.

Severe Heat Wave: When actual maximum temperature $\geq 47^{\circ}\text{C}$

(c). Criteria for heat wave for coastal stations

When maximum temperature departure is $> 4.5^{\circ}\text{C}$ from normal. Heat Wave may be described provided maximum temperature $\geq 37^{\circ}\text{C}$

Warm Night

When maximum temperature remains 40°C

Warm Night: When minimum temperature departure 4.5°C to 6.4°C .

Severe Warm Night: When minimum temperature departure $> 6.4^{\circ}\text{C}$.

Cold Wave

When minimum temperature of a station $\leq 10^{\circ}\text{C}$ for plains and $\leq 0^{\circ}\text{C}$ for hilly regions.

(a). Based on departure

Cold Wave: Minimum Temperature Departure from normal -4.5°C to -6.4°C .

Severe Cold Wave: Minimum Temperature Departure from normal $\leq -6.5^{\circ}\text{C}$

(b) Based on actual Minimum Temperature (for Plains only)

Cold Wave : When Minimum Temperature is $\leq 4.0^{\circ}\text{C}$

Severe Cold Wave: When Minimum Temperature is $\leq 2.0^{\circ}\text{C}$

(c) For Coastal Stations

When Minimum Temperature departure is $\leq -4.5^{\circ}\text{C}$ & actual Minimum Temperature is $\leq 15^{\circ}\text{C}$

Cold Day

When minimum temperature of a station $\leq 10^{\circ}\text{C}$ for plains and $\leq 0^{\circ}\text{C}$ for hilly regions

Based on departure

Cold Day: Maximum Temperature Departure from normal -4.5°C to -6.4°C .

Severe Cold Day: Maximum Temperature Departure from normal $\leq -6.5^{\circ}\text{C}$

Fog

Phenomenon of small droplets suspended in air and the horizontal visibility $< 1\text{km}$

Moderate Fog: When the visibility between 500-200 metres

Dense Fog: when the visibility between 50- 200 metres

Very Dense Fog: when the visibility < 50 metres

Thunderstorm

Sudden electrical discharges manifested by a flash of light (Lightning) and a sharp rumbling sound (thunder)

Dust/Sand Storm

An ensemble of particles of dust or sand energetically lifted to great heights by a strong and turbulent wind.

Frost

Ice deposits on ground

Air temperature $\leq 4^{\circ}\text{C}$ (over Plains)

Squall

A strong wind that rises suddenly, lasts for atleast 1 minute.

Moderate: Wind speed 52-61 kmph

Severe: Wind speed 62-87 kmph

Very Severe: Wind speed > 87 kmph

Sea State

Effect of various waves in the sea over specific area

Rough to very rough: Wind speed 41-62 kmph (22-33 knots) & Wave height 2.5-6 metre

High to very high: Wind speed 63-117 kmph (34-63 knots) & Wave height 6-14 metre

Phenomenal: Wind speed > 117 kmph (> 63 knots) & Wave height > 14 metre

Cyclone

Cyclonic Storm: Wind speed 62-87 kmph (34-47 knots)

Severe Cyclonic Storm: Wind speed 88-117 kmph (48-63 knots)

Very Severe Cyclonic Storm: Wind speed 118-165 kmph (64 - 89 knots)

Extremely Severe Cyclonic Storm: Wind speed 166-220 kmph (90 -119 knots)

Super Cyclone Storm: Wind speed > 220 kmph (> 119 knots)

* Red colour warning does not mean "Red Alert", Red colour warning means "Take Action".
Forecast and Warning for any day is valid from 0830 hours IST of day till 0830 hours IST of next day.
For more details, kindly visit <https://mausam.imd.gov.in> or contact: 011-2434-4599
(Service to the Nation since 1875)

Hot and Humid: When maximum temperatures remains 3°C above normal along with the above normal relative humidity.