

Tuesday, April 08, 2025
Time of Issue: 1945 hours IST
(NIGHT)

All India Impact Based Weather Warning Bulletin

Weather Warnings for next 7 days is given below:

(Graphics for warnings & rainfall distribution (Table 1) are given below the text:

08th April (Day 1):

- ❖ **Heavy rainfall** very likely at isolated places over Assam & Meghalaya, Tripura, Tamil Nadu, Puducherry & Karaikal and Kerala & Mahe.
- ❖ **Thunderstorm accompanied with lightning & gusty winds (speed reaching 40 - 50 kmph) & hailstorm** very likely at isolated places over East Madhya Pradesh; **with lightning & gusty winds (speed reaching 40 - 50 kmph)** at isolated places over Sub-Himalayan West Bengal & Sikkim, Jammu-Kashmir-Ladakh, Coastal Andhra Pradesh & Yanam; **with lightning & gusty winds (speed reaching 30 - 40 kmph)** at isolated places over Chhattisgarh, Gangetic West Bengal, Bihar, Jharkhand, Odisha, Assam & Meghalaya, Nagaland, Manipur, Mizoram & Tripura, Madhya Maharashtra, Telangana, Rayalaseema, Karnataka; with lightning at isolated places over Kerala & Mahe.
- ❖ **Heat wave at most places with severe Heat wave conditions** very likely in some places over West Rajasthan; **Heat wave at some places with severe Heat wave conditions** very likely in isolated pockets over East Rajasthan; Heat wave to severe Heat wave **conditions** in some parts of Punjab & Haryana-Chandigarh-Delhi, Saurashtra & Kutch; in isolated pockets of Himachal Pradesh; **Heat wave conditions** in isolated pockets of West Uttar Pradesh, Madhya Pradesh, Vidarbha, Gujarat Region.
- ❖ **Hot and humid weather** very likely in isolated pockets of Konkan & Goa, Madhya Maharashtra, Tamil Nadu, Puducherry & Karaikal, Kerala & Mahe.
- ❖ **Warm night conditions** very likely to prevail in many places over West Rajasthan; in isolated pockets over Punjab, Haryana-Chandigarh, East Rajasthan, West Madhya Pradesh, Madhya Maharashtra, Marathwada.
- ❖ **squally weather with wind speed 35 kmph to 45 kmph gusting to 55 kmph** very likely to prevail over southern parts of central bay of Bengal and adjoining northern parts of south bay of Bengal; **squally wind with wind speed 45 kmph to 50 kmph gusting to 55 kmph likely** to prevail over south Gujarat and adjoining north Maharashtra coasts. fishermen are advised not to venture into these areas.

09th April (Day 2):

- ❖ **Thunderstorm accompanied with lightning & gusty winds (speed reaching 40 - 50 kmph) & hailstorm** very likely at isolated places over Bihar; **with lightning & gusty winds (speed reaching 30 - 40 kmph)** at isolated places over Sub-Himalayan West Bengal & Sikkim, Jharkhand, East Madhya Pradesh; **with lightning, gusty winds (speed reaching 30 - 40 kmph) & hailstorm** at isolated places over Jammu-Kashmir-Ladakh-Gilgit-Baltistan-Muzaffarabad; **with lightning & gusty winds (speed reaching 30 - 40 kmph)** at isolated places over Himachal Pradesh, Uttarakhand, Gangetic West Bengal, Odisha, Assam & Meghalaya, Nagaland, Manipur, Mizoram & Tripura, Chhattisgarh, Coastal Andhra Pradesh & Yanam, Telangana, Karnataka; **with lightning** at isolated places over Punjab, East Uttar Pradesh, Kerala & Mahe.
- ❖ **Heat wave at some places with severe Heat wave conditions** very likely in isolated pockets over Rajasthan; Heat wave to severe Heat wave **conditions** in some parts of Punjab & Haryana-Chandigarh-Delhi; **Heat wave conditions** in isolated pockets of Vidarbha, Gujarat state.
- ❖ **Hot and humid weather** very likely in isolated pockets of Konkan & Goa, Madhya Maharashtra.
- ❖ **Warm night conditions** very likely to prevail in isolated pockets over Rajasthan, West Madhya Pradesh, Madhya Maharashtra, Marathwada.
- ❖ **squally weather with wind speed 35 kmph to 45 kmph gusting to 55 kmph likely** to prevail over many parts of westcentral bay of Bengal and adjoining parts. **Squally wind with wind speed 45 kmph to 50 kmph gusting to 55 kmph likely** to prevail over south Gujarat and adjoining north Maharashtra coasts. fishermen are advised not to venture into these areas.

10th April (Day 3):

- ❖ **Thunderstorm accompanied with lightning, gusty winds (speed reaching 40 - 50 kmph) very likely** at isolated places over Haryana-Chandigarh-Delhi, Rajasthan, Gangetic West Bengal, Bihar, Jharkhand, Odisha; **with lightning & gusty winds (speed reaching 30 - 40 kmph)** at isolated places over Himachal Pradesh, Uttarakhand, Punjab, Sub-Himalayan West Bengal & Sikkim, Chhattisgarh, Vidarbha, Assam & Meghalaya, Nagaland, Manipur, Mizoram & Tripura, Coastal Andhra Pradesh & Yanam; **with lightning** at isolated places over Uttar Pradesh, Kerala & Mahe, Coastal Karnataka, South Interior Karnataka.
- ❖ **Heat wave conditions very likely** in isolated pockets over Madhya Pradesh and Gujarat state.
- ❖ **Warm night conditions** very likely to prevail in isolated pockets over West Madhya Pradesh.
- ❖ **Squally weather with wind speed 35 kmph to 45 kmph gusting to 55 kmph** likely to prevail over gulf of Mannar, along and off south Tamil Nadu coast, over southwestern parts of southwest bay of banal, along and off south Sri Lanka coast. **Squally wind with wind speed 45 kmph to 50 kmph gusting to 55 kmph** likely to prevail over south Gujarat and adjoining north Maharashtra coasts. fishermen are advised not to venture into these areas.

11th April (Day 4):

- ❖ **Thunderstorm accompanied with lightning & gusty winds (speed reaching 40 - 50 kmph) likely** at isolated places over Gangetic West Bengal, Odisha, Assam & Meghalaya; **with lightning & gusty winds (speed reaching 30 - 40 kmph)** at isolated places over Himachal Pradesh, Uttarakhand, Rajasthan, East Madhya Pradesh, Vidarbha, Sub-Himalayan West Bengal & Sikkim, Jharkhand, Bihar, Nagaland, Manipur, Mizoram & Tripura, Telangana, Rayalaseema; **with lightning** at isolated places over Uttar Pradesh, Chhattisgarh, Tamil Nadu, Puducherry & Karaikal, Kerala & Mahe.
- ❖ **Squally weather with wind speed 35 kmph to 45 kmph gusting to 55 kmph** likely to prevail over gulf of Mannar, along and off Tamil Nadu coast, along and off Sri Lanka coast and adjoining southwest bay of Bengal. **Squally wind with wind speed 45 kmph to 50 kmph gusting to 55 kmph** likely to prevail along and off Oman coast and adjoining westcentral and northwest Arabian sea. fishermen are advised not to venture into these areas.

12th April (Day 5):

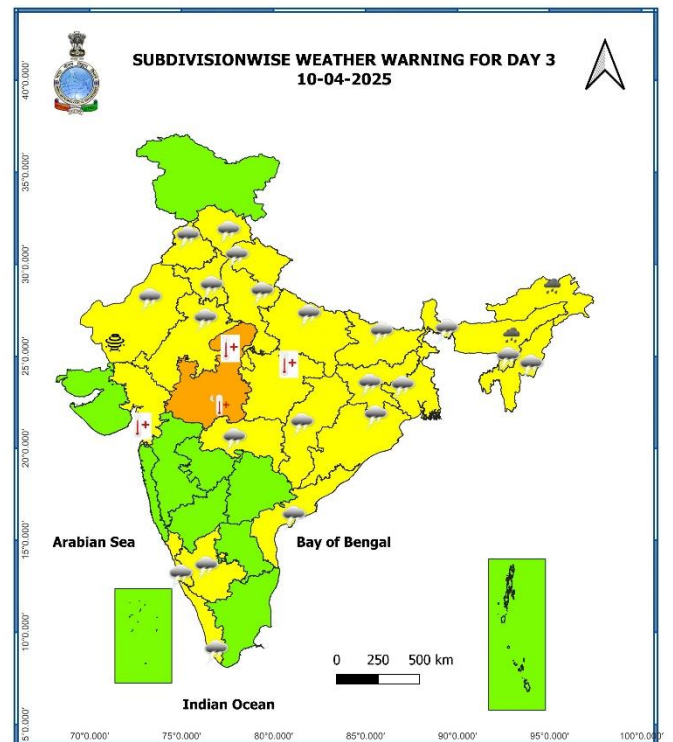
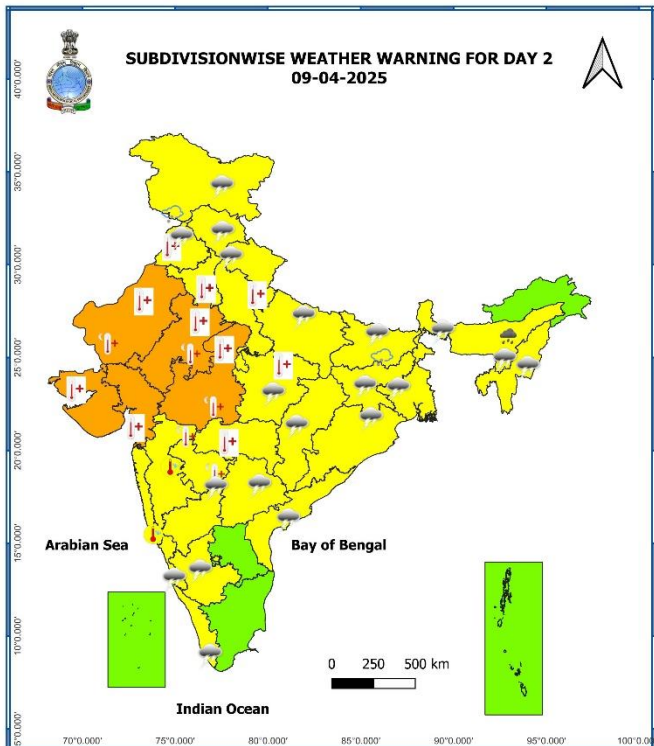
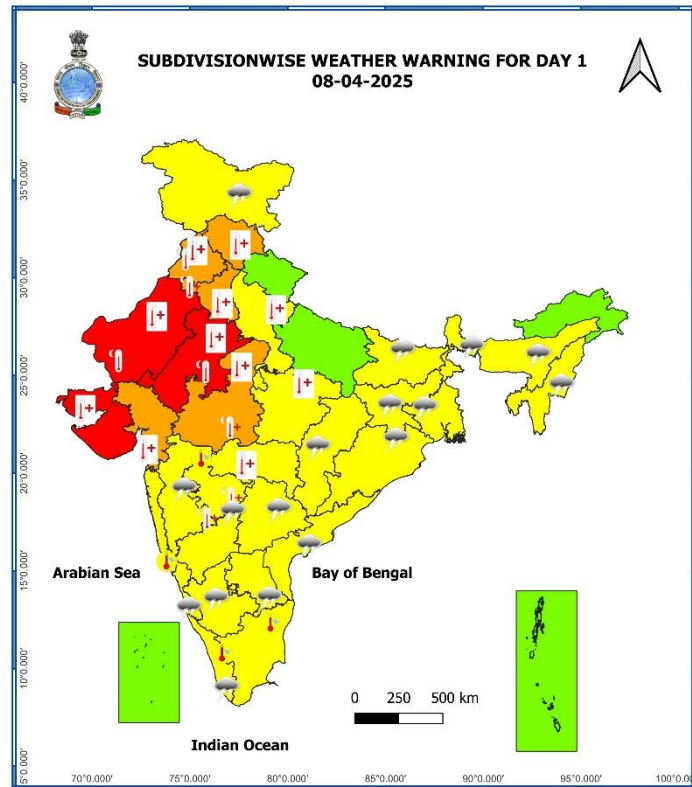
- ❖ **Thunderstorm accompanied with lightning & gusty winds (speed reaching 30 - 40 kmph) likely** at isolated places over Uttarakhand, East Madhya Pradesh, Vidarbha, West Bengal & Sikkim, Bihar, Jharkhand, Assam & Meghalaya, Nagaland, Manipur, Mizoram & Tripura, Rayalaseema; **with lightning** at isolated places over Uttar Pradesh, Chhattisgarh, Tamil Nadu, Puducherry & Karaikal.
- ❖ **Squally weather with wind speed 35 kmph to 45 kmph gusting to 55 kmph** likely to prevail over gulf of Mannar, along and off Tamil Nadu coast. **Squally wind with wind speed 45 kmph to 50 kmph gusting to 55 kmph** likely to prevail along and off Oman coast and adjoining westcentral and northwest Arabian sea. fishermen are advised not to venture into these areas.

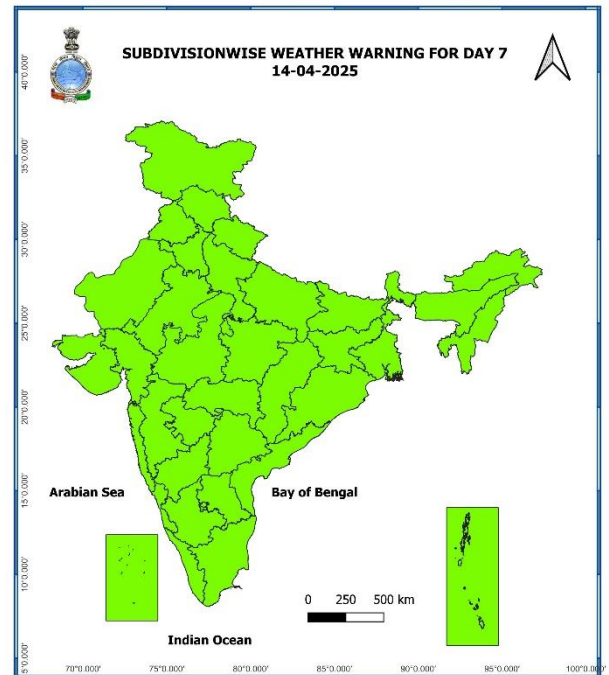
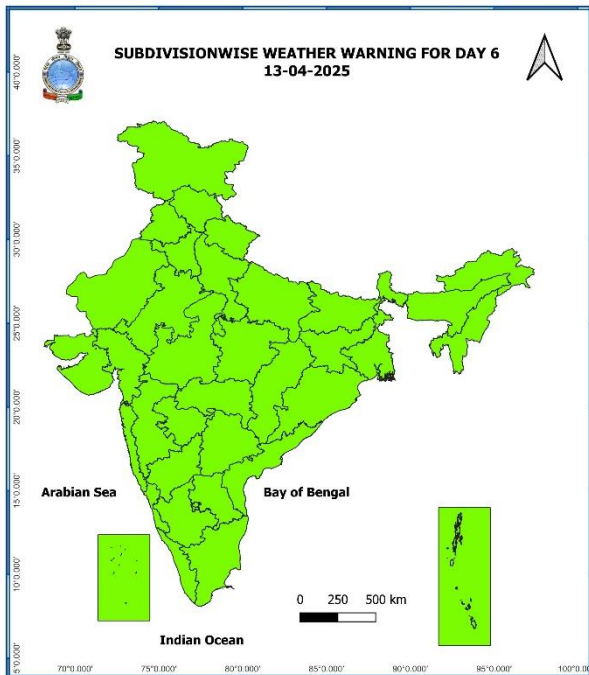
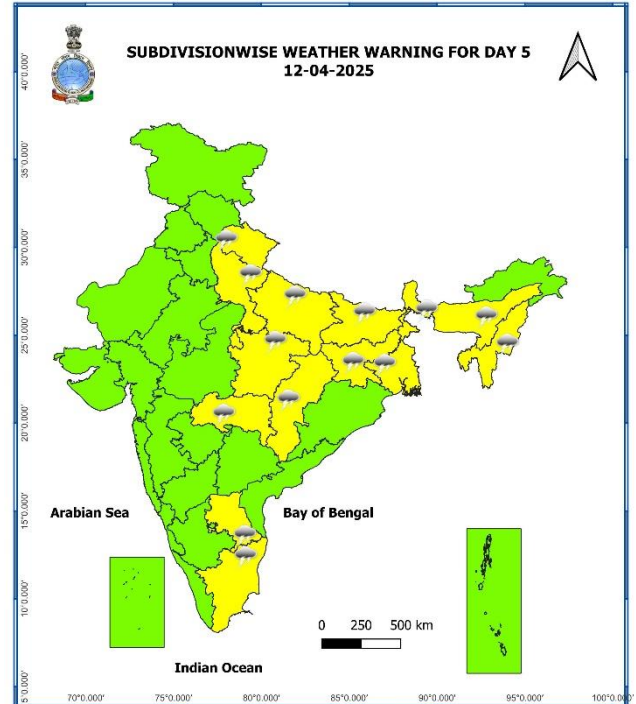
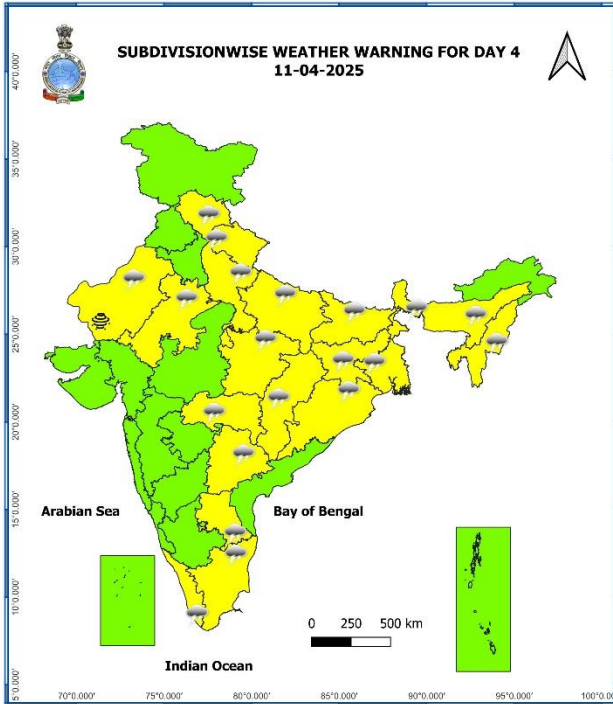
13th April (Day 6):

- ❖ **No weather warning.**

14th April (Day 7):

- ❖ **No weather warning.**





- Action may be taken based on **ORANGE AND RED** COLOUR warnings.
- Vulnerable regions likely urban and hilly areas action may be initiated for heavy rainfall warning.
- As the lead period increases forecast accuracy decreases.

Table-1

7 Days Rainfall Forecast

S. No.	Subdivision	08-Apr	09-Apr	10-Apr	11-Apr	12-Apr	13-Apr	14-Apr
		Day 1	Day 2	Day 3	Day 4	Day 5	Day 6	Day 7
1	ANDAMAN & NICOBAR ISLANDS	SCT	SCT	FWS	FWS	SCT	SCT	SCT
2	ARUNACHAL PRADESH	ISOL	ISOL	SCT	SCT	SCT	SCT	SCT
3	ASSAM & MEGHALAYA	SCT	FWS	WS	WS	WS	WS	FWS
4	NAGALAND, MANIPUR, MIZORAM & TRIPURA	SCT	ISOL	SCT	SCT	SCT	SCT	SCT
5	SUB-HIMALAYAN WEST BENGAL & SIKKIM	SCT	FWS	FWS	FWS	FWS	FWS	SCT
6	GANGETIC WEST BENGAL	ISOL	ISOL	SCT	SCT	ISOL	ISOL	SCT
7	ODISHA	ISOL	ISOL	SCT	SCT	ISOL	ISOL	ISOL
8	JHARKHAND	ISOL	ISOL	SCT	SCT	ISOL	SCT	SCT
9	BIHAR	ISOL	SCT	SCT	SCT	SCT	ISOL	ISOL
10	EAST UTTAR PRADESH	ISOL	ISOL	ISOL	SCT	SCT	ISOL	DRY
11	WEST UTTAR PRADESH	DRY	ISOL	ISOL	SCT	ISOL	DRY	DRY
12	UTTARAKHAND	DRY	SCT	FWS	FWS	SCT	DRY	DRY
13	HARYANA CHANDIGARH & DELHI	DRY	DRY	ISOL	ISOL	DRY	DRY	DRY
14	PUNJAB	DRY	ISOL	ISOL	ISOL	DRY	DRY	DRY
15	HIMACHAL PRADESH	DRY	SCT	SCT	SCT	ISOL	DRY	DRY
16	JAMMU & KASHMIR AND LADAKH	ISOL	FWS	FWS	SCT	ISOL	DRY	DRY
17	WEST RAJASTHAN	DRY	DRY	ISOL	ISOL	DRY	DRY	DRY
18	EAST RAJASTHAN	DRY	DRY	ISOL	ISOL	ISOL	DRY	DRY
19	WEST MADHYA PRADESH	DRY	DRY	DRY	ISOL	ISOL	ISOL	ISOL
20	EAST MADHYA PRADESH	DRY	DRY	DRY	ISOL	ISOL	ISOL	ISOL
21	GUJARAT REGION	DRY	DRY	DRY	DRY	DRY	DRY	DRY
22	SAURASHTRA & KUTCH	DRY	DRY	DRY	DRY	DRY	DRY	DRY
23	KONKAN & GOA	ISOL	DRY	DRY	DRY	DRY	DRY	DRY
24	MADHYA MAHARASHTRA	ISOL	ISOL	DRY	DRY	DRY	DRY	DRY
25	MARATHAWADA	ISOL	ISOL	ISOL	DRY	DRY	DRY	DRY
26	VIDARBHA	DRY	DRY	DRY	ISOL	ISOL	ISOL	DRY
27	CHHATTISGARH	ISOL	ISOL	ISOL	ISOL	ISOL	ISOL	ISOL
28	COASTAL ANDHRA PRADESH & YANAM	ISOL	ISOL	ISOL	SCT	SCT	SCT	SCT
29	TELANGANA	ISOL	ISOL	ISOL	ISOL	ISOL	ISOL	ISOL
30	RAYALASEEMA	ISOL	ISOL	ISOL	SCT	SCT	SCT	SCT
31	TAMILNADU PUDUCHERRY & KARAIKAL	ISOL	ISOL	ISOL	ISOL	ISOL	ISOL	ISOL
32	COASTAL KARNATAKA	ISOL	ISOL	ISOL	ISOL	ISOL	ISOL	ISOL
33	NORTH INTERIOR KARNATAKA	ISOL	ISOL	ISOL	ISOL	ISOL	ISOL	ISOL
34	SOUTH INTERIOR KARNATAKA	ISOL	ISOL	ISOL	ISOL	ISOL	ISOL	ISOL
35	KERALA & MAHE	SCT	SCT	SCT	SCT	SCT	SCT	SCT
36	LAKSHADWEEP	SCT	SCT	SCT	SCT	DRY	DRY	DRY

• As the lead period increases forecast accuracy decreases.

Impact expected and action suggested due to Heat wave to severe heat wave conditions likely at isolated to some pockets over Gujarat state, Rajasthan on 08th & 09th and Himachal Pradesh, Punjab, Haryana, Chandigarh & Delhi on 08th April.

Red alert Areas

- Very high likelihood of developing heat illness and heat stroke in all ages.
- Extreme care needed for vulnerable people.

Orange alert Areas

- High temperature & increased likelihood of heat illness symptoms in people who are either exposed to sun for a prolonged period or doing heavy work.
- High health concern for vulnerable people e.g. infants, elderly, people with chronic diseases.
- Avoid heat exposure- keep cool. Avoid dehydration.
- Drink sufficient water- even if not thirsty.
- Use ORS, homemade drinks like lassi, torani (rice water), lemon water, buttermilk, etc. to keep yourself hydrated.

Yellow alert Areas

- Moderate temperature & heat is tolerable for general public but moderate health concern likely for vulnerable people e.g. infants, elderly, people with chronic diseases.
- Avoid heat exposure.
- Wear lightweight, light colour, loose, cotton clothes.
- Cover your head, use a cloth, hat or umbrella.

Agromet advisories for likely impact of Hailstorm / Heavy Rainfall / Gusty Winds / Heatwave

- In **Jammu & Kashmir and Bihar**, immediately harvest the matured crops, fruits and vegetables and shift the harvested produce in safer places or cover the produce with tarpaulin sheets in the fields to avoid the adverse impact of likely hailstorm. Use hail net and hail caps to prevent mechanical damage in orchards due to hailstorms.
- In **Arunachal Pradesh and Meghalaya**, immediately harvest the matured crops, fruits and vegetables and shift the harvested produce in safer places or cover the produce with tarpaulin sheets in the fields. Also make provision to drain out excess water from standing crop and vegetable fields.
- In **Himachal Pradesh, Punjab, Haryana, West Uttar Pradesh, Rajasthan, Madhya Pradesh, Vidarbha and Gujarat State**, apply light and frequent irrigation to standing crops in the evening to protect them from heat waves.
- Provide mechanical support to horticultural crops and staking to vegetables to avoid lodging.
- **Livestock / Poultry / Fishery**
- Keep the animals inside the shed during heavy rainfall / hailstorm and provide them balanced feed.
- Store feed and fodder in a safe place to prevent spoilage.
- To reduce the effect of heat wave/high temperature, cover the roof of poultry sheds with grass. Also provide clean, hygienic and plenty of drinking water to animals.
- Construct an outlet with proper netting around the ponds to drain out excess water, thereby preventing fish from escaping in case of overflow.

DEFINITION/CRITERIA

Rain/ Snow *

Heavy: 64.5 to 115.5 mm/cm *

Very Heavy: 115.6 to 204.4 mm/cm *

Extremely Heavy: > 204.4 mm/cm *

Heat Wave

When maximum temperature of a station reaches $\geq 40^{\circ}\text{C}$ for plains and $\geq 30^{\circ}\text{C}$ for hilly regions

(a) Based on Departure from normal

Heat Wave: Maximum Temperature Departure from normal 4.5°C to 6.4°C .

Severe Heat Wave: Maximum Temperature Departure from normal $\geq 6.5^{\circ}\text{C}$

(b). Based on Actual maximum temperature

Heat Wave: When actual maximum temperature $\geq 45^{\circ}\text{C}$.

Severe Heat Wave: When actual maximum temperature $\geq 47^{\circ}\text{C}$

(c). Criteria for heat wave for coastal stations

When maximum temperature departure is $> 4.5^{\circ}\text{C}$ from normal. Heat Wave may be described provided maximum temperature $\geq 37^{\circ}\text{C}$

Warm Night

When maximum temperature remains 40°C

Warm Night: When minimum temperature departure 4.5°C to 6.4°C .

Severe Warm Night: When minimum temperature departure $> 6.4^{\circ}\text{C}$.

Cold Wave

When minimum temperature of a station $\leq 10^{\circ}\text{C}$ for plains and $\leq 0^{\circ}\text{C}$ for hilly regions.

(a). Based on departure

Cold Wave: Minimum Temperature Departure from normal -4.5°C to -6.4°C .

Severe Cold Wave: Minimum Temperature Departure from normal $\leq -6.5^{\circ}\text{C}$

(b) Based on actual Minimum Temperature (for Plains only)

Cold Wave : When Minimum Temperature is $\leq 4.0^{\circ}\text{C}$

Severe Cold Wave: When Minimum Temperature is $\leq 2.0^{\circ}\text{C}$

(c) For Coastal Stations

When Minimum Temperature departure is $\leq -4.5^{\circ}\text{C}$ & actual Minimum Temperature is $\leq 15^{\circ}\text{C}$

Cold Day

When minimum temperature of a station $\leq 10^{\circ}\text{C}$ for plains and $\leq 0^{\circ}\text{C}$ for hilly regions

Based on departure

Cold Day: Maximum Temperature Departure from normal -4.5°C to -6.4°C .

Severe Cold Day: Maximum Temperature Departure from normal $\leq -6.5^{\circ}\text{C}$

Fog

Phenomenon of small droplets suspended in air and the horizontal visibility $< 1\text{km}$

Moderate Fog: When the visibility between 500-200 metres

Dense Fog: when the visibility between 50- 200 metres

Very Dense Fog: when the visibility < 50 metres

Thunderstorm

Sudden electrical discharges manifested by a flash of light (Lightning) and a sharp rumbling sound (thunder)

Dust/Sand Storm

An ensemble of particles of dust or sand energetically lifted to great heights by a strong and turbulent wind.

Frost

Ice deposits on ground

Air temperature $\leq 4^{\circ}\text{C}$ (over Plains)

Squall

A strong wind that rises suddenly, lasts for atleast 1 minute.

Moderate: Wind speed 52-61 kmph

Severe: Wind speed 62-87 kmph

Very Severe: Wind speed > 87 kmph

Sea State

Effect of various waves in the sea over specific area

Rough to very rough: Wind speed 41-62 kmph (22-33 knots) & Wave height 2.5-6 metre

High to very high: Wind speed 63-117 kmph (34-63 knots) & Wave height 6-14 metre

Phenomenal: Wind speed > 117 kmph (> 63 knots) & Wave height > 14 metre

Cyclone

Cyclonic Storm: Wind speed 62-87 kmph (34-47 knots)

Severe Cyclonic Storm: Wind speed 88-117 kmph (48-63 knots)

Very Severe Cyclonic Storm: Wind speed 118-165 kmph (64 - 89 knots)

Extremely Severe Cyclonic Storm: Wind speed 166-220 kmph (90 -119 knots)

Super Cyclone Storm: Wind speed > 220 kmph (> 119 knots)

* Red colour warning does not mean "Red Alert", Red colour warning means "Take Action".
Forecast and Warning for any day is valid from 0830 hours IST of day till 0830 hours IST of next day.
For more details, kindly visit <https://mausam.imd.gov.in> or contact: 011-2434-4599
(Service to the Nation since 1875)

Hot and Humid: When maximum temperatures remains 3°C above normal along with the above normal relative humidity.